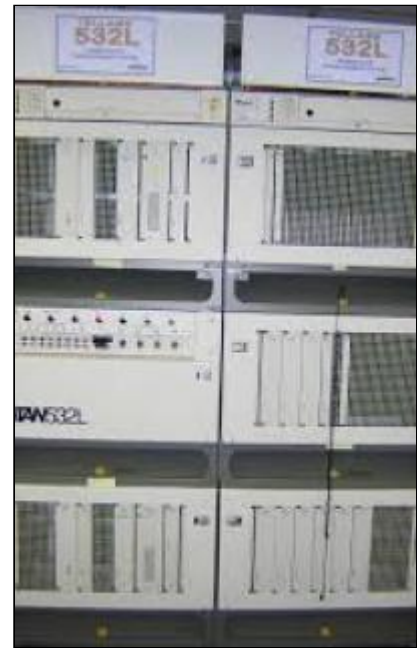


## Course Description

The Hands-On course will cover the Tellabs 530 / 532L that are considered a 3 / 1 / 0 dacs (digital cross connect system) Input/output ports can be DS3, STS1, E1 or DS1. Cross connects can be managed down to the DS0 (64k) level. There is a high degree of commonality in design and equipment between the Tellabs 5320L system and the Tellabs 5500 system.

The design and equipment of the administrative control subsystem and of the SONET- based switch network subsystem are nearly identical in these two Tellabs product lines. This permits significant cost reductions in maintenance and spare parts inventory.

This course will give attendees that are new to this system a strong foundation on the basic and some advanced operations of these systems. Students will be able to perform day-to-day operations and the tasks necessary to support these systems upon completion of this course.



## Students Will Learn

- **Basic DS1, DS3 and STS1 Functionality (frame formats / line coding)**
- **Typical Test Equipment used to Monitor and Troubleshoot Circuits**
- **Overview of DACS**
- **Physical Layout of the 532 system (Fuse / Alarm Panel, Administrative Complex, Network Complex and Port Complexes.**
- **Remote Access Menu and Commands**
- **System Administration Input Command Language and Output Responses.**
- **Cross Connect Provisioning, STS1, DS3 DS1 and DS0**
- **How to use a TAP (Test Access Port) to Monitor or Intrusively Test a Circuit**
- **How to Identify and Clear Trouble from Autonomous Alarm Messages**
- **System Back-Up and Restore using the DUMP ALL and BOOT ALL Commands.**
- **System Crash Resolutions and Fixes**
- **Maintenance and Circuit Pack Replacement**
- **530 Versus 532 any Major Differences**

## Target Audience

This training course is intended for technicians responsible for understanding, maintenance, troubleshooting and support of these Tellabs DACS 530 / 532 systems for remote and on-site support.

## Prerequisites

Basic understanding of LADWP network environment and the Tellabs DACS 530 / 532 systems with some experience is suggested.

## Delivery Method

On-Site or LIVE Instructor-Led Virtual

## Equipment Requirements

**(This apply's to our hands-on courses only)**

(This applies to our hands-on courses only on a case-by-case basis)

BTS always provides equipment to have a very successful Hands-On course. BTS also encourages all attendees to bring their own equipment to the course. This will provide attendees the opportunity to incorporate their own equipment to gain valuable training using their specific equipment.

BTS always provides equipment to have a very successful Hands-On course. BTS also encourages all attendees to bring their own equipment to the course. This will provide attendees the opportunity to incorporate their own gear into the labs and gain valuable training using their specific equipment.

## Course Length

4 Days